



# The Tallahassee Community Chorus

**Dr. Michael Hanawalt, Artistic Director  
Yuliia Billa & Isiah Maxey, Assistant Conductors**

## **2023~2024 SINGER HANDBOOK** *with* **HEALTH AND SAFETY REQUIREMENTS AND GUIDELINES**

**Chorus Mailing Address:**  
Post Office Box 13083  
Tallahassee, FL 32317-3083  
Phone: 850-597-0603  
[www.tcchorus.org](http://www.tcchorus.org)

**Membership Team:**  
[membership@tcchorus.org](mailto:membership@tcchorus.org)

# 2023-2024 Concert Season

**Sunday, November 19, 2023 @ 4:00 pm**

*FALL: Elijah, Felix Mendelssohn*

**Sunday, December 3, 2023 @ 7:30 pm**

*Seasonal Celebration w/ FSU Choral Dept.*

**Sunday, January 28, 2024 @ 4:00 pm**

**UNITY 17: Sounds of Cinema - Celebrating Tallahassee's Bicentennial**

**Sunday, April 28, 2024 @ 4:00 pm**

**SPRING: Missa in Angustiis (Nelson Mass), F.J. Haydn**

*Te Deum, F.J. Haydn*

*The Chariot Jubilee, R. Nathaniel Dett*

## **Season Subscription Prices:**

\$60/\$50/\$20

Adult/Senior (62+)/Student

*Call 850-597-0603 to order*

## **Individual Ticket Prices (Purchased online in advance\*):**

\$25/\$20/\$10

Adult/Senior (62+)/Student

*Single tickets go on sale October 6, 2023*

*All Ticket Sales Final – No Refunds*

## **Ticket Outlets:**

<https://www.tchorus.org>

Box Office: 850-597-0603

*Unless otherwise specified, all performances & dress rehearsals at Ruby Diamond Concert Hall at FSU (College Ave & Copeland St).*

*\*Delivery fees may apply for first class mail and will-call ticket delivery*

## ***WELCOME!***

On behalf of The Tallahassee Community Chorus Board of Directors, Administrative and Artistic staff, welcome to our 36<sup>th</sup> season of filling Tallahassee with song! Whether you are returning to us from last season or seasons past, or you are joining us for the first time, we hope you will stick it out and learn some great music, renew some friendships, make some new friends, and enjoy the community that singing in a choir creates. This season is especially meaningful, because 2024 is Tallahassee's Bicentennial!

Your commitment and your willingness to contribute to the long-term sustainability of your Chorus, by donating financially or serving through volunteerism, will further enhance your experience. It takes the entire ensemble, along with our dedicated artistic and administrative staff, our volunteers, and the support of our patrons, sponsors, and friends to present the quality of performances our community has come to expect from an award-winning ensemble of our size. Your willingness to help with more than your voice is not only vital but is enormously appreciated by your volunteer Board of Directors!

We hope this handbook answers your questions and concerns about attendance requirements, health and safety protocols, rehearsals, performance etiquette and concert attire. Feel free to ask any Board member or Maclain (they are the folks with "Board Member" ribbons on their name tags) if you have any questions! We also welcome your suggestions via our membership email box: [membership@tcchorus.org](mailto:membership@tcchorus.org).

### ***PLEASE READ ALL INFORMATION!***

Registration will be completed online by all singers prior to the first rehearsal, which is scheduled for **Monday, August 28, 2023**. Dues must be paid online at [www.chorusconnection.com](http://www.chorusconnection.com) or by sending a check, payable to Tallahassee Community Chorus, to PO Box 13083, Tallahassee, FL 32317-3083. Please include "Singer Registration" on the check Memo line.

### ***Wishing Everyone a Meaningful and Successful Concert Season!***

Jan Smith, President, Board of Directors

Dr. Michael Hanawalt, Artistic Director

Maclain Hardin-Kurza, Executive Director

Annemarie Boehnlein, Director of Membership

Marie Clewis, Assistant Director of Membership



### ***Make the Most Out of Your Membership:***

***READ*** this Handbook all the way through!

***READ*** the weekly email newsletter, "Monday Night Notes,"  
and check [www.chorusconnection.com](http://www.chorusconnection.com) regularly!

***MARK & BRING*** your music to every rehearsal! (Bring a pencil if using a paper score!)

***EMAIL*** our membership team at [membership@tcchorus.org](mailto:membership@tcchorus.org) if you will be absent or late.

***FOLLOW*** all health & safety protocols.

***RESPECT*** yourself & your fellow choristers.

***TELL*** us about major events coming up for you and your Chorus friends/family  
by posting on the bulletin board at [www.chorusconnection.com](http://www.chorusconnection.com)

## *About the Chorus*

### **Mission:**

To present residents of Leon and the surrounding counties with live concerts of choral masterworks of the highest caliber, to provide educational opportunities in the community, and to showcase Tallahassee's cultural distinction via national and international travel. The Tallahassee Community Chorus strives to maintain one of the finest non-auditioned mixed community choral ensembles in the nation.

### **Brief History:**

Formed in 1988, the Chorus presents three concerts per season and performs in the annual FSU "Seasonal Celebration" concert. The Chorus is the only community chorus of its size and quality that does not require an audition for membership. The Chorus generally travels every alternate year.

In addition to being internationally acclaimed, in 2017, the Chorus received the American Prize Award, Community Chorus Division, and a Second Place American Prize Award for Arts Marketing. The Chorus performed the opening concert of the American Choral Directors Association (ACDA) 60th National Convention, presenting the world premiere of *Mass: A Celebration of Love and Joy*, by former Artistic Director André Thomas, and this past summer performed at the Lisbon Choral Festival in Portugal. The Chorus has performed in various venues nationally and internationally and under the batons of such esteemed guest conductors as Krzysztof Penderecki, the late Sir David Willcocks, the late Robert Shaw, Simon Halsey, Dr. Anton Armstrong, and Dr. Rollo Dilworth.

### **Travel Experiences:**

2004 Carnegie Hall Performance, New York City  
2007 Beijing International Choral Festival, China  
2008 Kennedy Center Performance, Washington DC  
2011 Prague Choral Festival, Czech Republic  
2013 Paris Choral Festival, Paris, France  
2015 Rome Choral Festival, Rome, Italy & the Vatican  
2017 Limerick Sings! International Choral Festival, Limerick, Ireland  
2019 ACDA National Convention, Kansas City, MO  
2023 Lisbon Choral Festival, Lisbon, Portugal



## *Singer Membership Eligibility & Requirements*

### **Access, Diversity, Equity, and Inclusion (ADEI) Statement:**

*The Tallahassee Community Chorus welcomes singers of all musical abilities and ages, middle school-age and above, and shall not discriminate or condone discrimination on the basis of sex, race, religion, color, gender, gender identity, gender expression, national origin or ancestry, physical and/or mental disability, medical condition, genetic information, marital status, registered domestic partner status, age, sexual orientation, military and/or veteran status, socio-economic status, or any other basis protected by federal, state or local law or ordinance or regulation.*

Download the Chorus “Prohibition of Discrimination and Harassment, and Complaint Procedure” via Chorus Connection at [www.chorusconnection.com](http://www.chorusconnection.com).

### **Singer Membership Eligibility:**

The Tallahassee Community Chorus welcomes singers of the community of all musical abilities and ages, middle school-age and above who commit to the purpose and principles. *All Singers must sign a “Singer Commitment & Acknowledgment” statement when they register for the 2023-2024 Concert Season.*

No auditions are required to sing in the Chorus; however, the abilities to match pitch and follow directed tempos are important to the quality of performance and may be verified at the discretion of the Artistic Director.

Singer membership may be denied or revoked for failure to meet and maintain membership requirements, or for consistent failure to comply with Chorus policies or participation requirements.

### **Requirements to Maintain Membership:**

1. Attend rehearsals and comply as required.
2. Complete all registration requirements.
3. Pay dues by third rehearsal as mandated by the Board.
4. Comply with all membership requirements, including health and safety protocols as published and amended or updated.
5. Comply with ADEI policies and procedures.

### **Rehearsal Requirements (see also Health and Safety Requirements):**

1. Be on time, ready to begin at the designated start time; stay for the entire rehearsal. If you will be late or absent, report this to the membership team ([membership@tcchorus.org](mailto:membership@tcchorus.org)) in advance, if possible, or as soon as possible after the absence or tardiness (*see also: Health and Safety Requirements and Guidelines*).
2. Permanent nametags on lanyards will be provided to each Singer. Returning members should bring their lanyard from previous seasons. New members will receive their nametag on the first night of rehearsal. It is each singer’s responsibility to wear their nametag to each subsequent rehearsal and to all dress rehearsals. If you change voice parts or lose your nametag, please notify the Membership Team via email to [membership@tcchorus.org](mailto:membership@tcchorus.org) and a new nametag will be issued.
3. A seat chart will be posted for rehearsal seating each week. The Membership Team uses the seat chart and takes attendance no more than 10 minutes after the start of each rehearsal. If you are not in your assigned seat when attendance is taken, you will be recorded as absent.
4. No gum, candy, or food is permitted in rehearsals. No beverages except water in your container with a secure lid or top. NOTE: we comply with all venue requirements. If the venue prohibits all beverages, then do not bring any beverage.
5. No homework is to be done during rehearsal.
6. Unless otherwise specified by the Artistic Director, iPads and tablets may be utilized to display music during rehearsals. Turn off all other unnecessary electronic devices; **NO texting, messaging, emailing, posting, or gaming on your phone or other device during rehearsals. It is disrespectful to our conductors and to each other. Photography, video, or audio recording is not allowed without permission.** Your phone or device may be held until the end of rehearsal for continued violation, which may result in you losing access to your music! It is not worth the risk!

## **Rehearsal Time & Location:**

**Time:** 7:00 – 9:00 pm every Monday. Rehearsal times and dates may be changed, and additional rehearsals may be called by the Artistic Director.

**Location:** Alfriend Hall at St. John’s Episcopal Church (Corner of Monroe & Call Streets, entry from Calhoun Street). **Parking:** See <https://tcchorus.org> for parking information. PLEASE DO NOT PARK IN RESTRICTED, PERMIT ONLY TOW-AWAY LOTS OR THE DRIVE-THRU LOT!

## **Concert Etiquette:**

1. No cell phones on stage or backstage.
2. No gum, candy, or food. No water onstage; water in a secure container backstage only if permitted by the venue.
3. No perfume or cologne.
4. No talking.
5. No clapping for fellow performers.
6. No waving to the audience.
7. No smoking during intermission.
8. Comply with all venue requirements.
9. **All music must be in a black folder or tablet with a black cover, unless otherwise specified.**
10. Do enjoy the experience – you earned it!

## **Concert Attire Requirements:**

Regulated concert black is the required attire for the Chorus. Attire will include:

1. Black dress shirt; cap-sleeve length or longer
2. Black bottom of singer’s choice to include ankle length pants or full-length black skirt. Leggings or capris are not allowed.
3. Close-toed black dress shoes
4. Black knee highs or black socks.
5. No neckwear, dangling earrings, flashy or large jewelry/hair-wear is allowed.
6. Those who already own previously required dresses/tuxedos may continue to use them so long as they comply with the current requirements. Please check with Membership.

## **Chorus Participation Requirements\*:**

1. Be a member in good standing.
2. Attend all regular rehearsals with no more than three absences per semester. After three absences, concert participation will be at the discretion of the Artistic Director.
3. Be punctual for all rehearsals with no more than five late arrivals per semester.
4. Attend **all** dress rehearsals (those at the concert venue) for the specific performance (unless **prior** approval is granted by Director of Membership or Artistic Director).
5. Wear the required concert attire.
6. Behave in a manner that is not detrimental or distracting to other performers at rehearsals and performances.
7. Make a musical and artistic contribution to the chorus (at a minimum, you must be able to match pitch and maintain directed tempo).

\*Items 1, 2, 3, shall be determined from attendance records of the chorus. Items 4, 5 & 6 shall be determined by the Artistic Director, the President and two other voting members of the Board of Directors. Item 7 shall be determined by the Artistic Director. *Any person who does not fulfill all 7 requirements will not be allowed to perform at the discretion of the Artistic Director, and membership may be revoked or denied by the Board upon consultation with the Artistic Director.*

## Support Your Chorus with More Than Your Voice

### **Donate!**

Support your Chorus with a donation! Ask your employer about their donation matching program. One-time or recurring donations to the fund of your choice can be made at <https://www.tcchorus.org>.

### **Promote Your Chorus!**

Volunteer to help with marketing! Ask a local business you support to support your community arts organization by sponsoring a rehearsal or a concert! (Email [membership@tcchorus.org](mailto:membership@tcchorus.org) to find out how!) Share the Chorus social media posts and let us know if you would like an eblast sent to your school, group, or organization! Encourage your friends, colleagues, and family members to buy tickets to our performances!



### **Follow Us Online and Share Our Posts!**

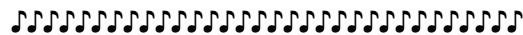
Facebook: <https://facebook.com/TheTallahasseeCommunityChorus>

Instagram: <https://www.instagram.com/tcchorus> or @tcchorus

YouTube: <https://youtube.com/TheTallahasseeCommunityChorus>

### **Volunteer!**

Reach out to us for upcoming opportunities at [membership@tcchorus.org](mailto:membership@tcchorus.org).



## **Your Board of Directors & Staff**

Dr. Michael Hanawalt, Artistic Director  
Yuliia Billa, Assistant Conductor  
Isiah Maxey, Assistant Conductor  
Dr. Judy Arthur, Collaborative Pianist  
Maclain Hardin-Kurza, Executive Director  
Jan Smith, President  
Barbara D'Annunzio, Past President  
Gail Weathersbee, Treasurer  
Donna Smithey, Secretary  
Vanessa Pinto, Director of Fund Development  
Annemarie Boehnlein, Director of Membership  
Marie Clewis, Assistant Director of Membership  
Dora Thomas, Director of Outreach/Engagement  
Jamie Kocur, Member At-Large  
David Young, Director of Logistics  
Todd Hinkle, Director of Ticket Sales  
Chris Gorsuch, Librarian  
Jason Taylor, Board Attorney  
Arts Administration Interns (to be announced)

**THE TALLAHASSEE COMMUNITY CHORUS**  
**HEALTH AND SAFETY REQUIREMENTS AND GUIDELINES**  
**2023-2024 CONCERT SEASON**

In recognition of the current recommendations of the Centers for Disease Control and other authorities, the Board of Directors enacts the following policies and protocols to reasonably protect our singers from exposure to COVID-19 and its variants, and other communicable illnesses likely to be encountered when a large group of people congregates in a single location to sing. This policy is not intended to be the only possible solution, but to provide reasonable guidance to Chorus members, based on recently published guidelines by the Centers for Disease Control. Members of the Chorus are expected to become familiar with this policy and to comply with it to care for themselves and their fellow singers. The guidelines adopted in this policy are not exhaustive or exclusive, and singers are free to utilize additional practices as they deem necessary, or as recommended or required by their physicians.

The following recommendations are designed to limit the spread of a communicable illness, including COVID-19 and its variants, by reducing the opportunities for unnecessary close contact between people and ensuring proper actions are taken to maintain the cleanliness of the rehearsal space.

**Vaccinations:** To maximize the safety of all participants, The Tallahassee Community Chorus strongly recommends and encourages all singers, staff, and other participants attending in-person rehearsals, performances or other Chorus gatherings to receive vaccinations for which they may be eligible, including, but not limited to COVID-19 vaccinations and boosters, flu shots, and such other vaccinations as may be offered to protect themselves and their fellow participants from exposure to communicable illness.

**Pre-Rehearsal Health Self-Check:** Every singer is asked to assess their health prior to leaving for rehearsal or performance. Singers having a temperature, cough, or any hint of illness are requested to stay home. Notify the Membership Team of an absence via email to [membership@tcchorus.org](mailto:membership@tcchorus.org).

**Non-Member Visitors:** Visitors or guests will not be permitted into non-performance settings without prior notice to the Membership Team. Visitors authorized by the rehearsal venue who enter the rehearsal hall should notify a Board member of their presence and purpose if the venue has not previously informed the Chorus of the visit.

**Social Distancing:** The rehearsal seating chart (Monday rehearsals) may be set up to allow some distance between singers, although, due to the room capacity and size, distancing of the recommended three or six feet cannot be guaranteed. Please do not move or rearrange the chairs. Rehearsal participants are required to sit in their assigned seats. Please notify the membership team, a board member, or the executive director if a seat change is needed. (Please note that we will continue to reasonably accommodate seating requests from our singers who have notified us of the need for accommodation due to disability). Please respect your fellow singers who prefer to maintain some distance when not seated, wear facemasks, or prefer to refrain from physical greetings or contact with other Chorus participants.

**Sanitization:** Hand sanitizer will be available at rehearsal, and Chorus participants may bring their own sanitizer. Participants should cover coughs and sneezes with a tissue or cough and sneeze into the upper sleeve if tissues are not available. Wash hands or use a hand sanitizer after coughing, sneezing, or blowing the nose.

**Report Possible Exposure:** Participants who have tested positive for COVID-19 either before or after attending a rehearsal or other Chorus gathering, or who have been in contact with someone who has tested positive for COVID-19 (even if the person is asymptomatic), are required to report same to the membership team ([membership@tcchorus.org](mailto:membership@tcchorus.org)) immediately and before attending the next scheduled rehearsal or other Chorus gathering.



**Actions to Take if you have or suspect you have COVID-19:** The Board recommends, and requests that singers follow the CDC isolation and precaution guidelines attached to this Handbook, and online at <https://www.cdc.gov/coronavirus/2019-ncov/your-health/if-you-were-exposed.html>.

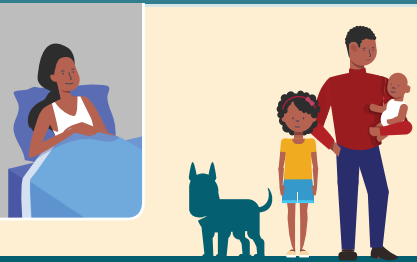
**Exposure Incident on Site:** Should there be a known or reported instance of exposure to a communicable illness, such as COVID-19, or a participant or visitor who tests positive for the COVID-19 virus after an in-person meeting, The Chorus will take the following measures:

1. Immediate communication via email with all Chorus participants regarding the exposure and recommended actions based on current guidelines; and
2. If necessary, follow-up communication will be made via email with the reporting participant and any participants who subsequently report being affected, regarding health status, and any alteration in normal process. Any medical information received by the Chorus will be kept confidential, except where there is a legitimate need to know.

If you have questions, contact the Membership Team ([membership@tcchorus.org](mailto:membership@tcchorus.org)). The above policies are updated, as necessary, with notice given of any updates.

# Isolate and take precautions if you have or suspect you have COVID-19

## ISOLATION



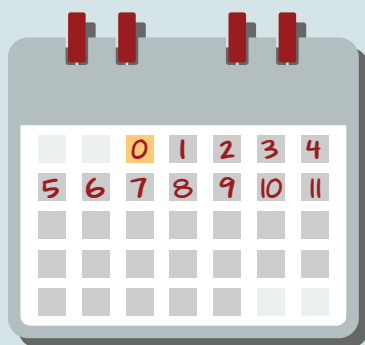
**Stay home and away from others**

Wear a high-quality mask if you must be around others

### Start counting days

Day 0 is the day your symptoms started

If you never had symptoms, day 0 is the day you took a COVID-19 test



**Watch for emergency warning signs, like trouble breathing**

Seek help if they develop

## ENDING ISOLATION

**Isolate to day 6 or later, if you**

- never had symptoms or symptoms are improving, and
- are fever-free for 24 hours without the use of fever-reducing medication



**Continue to isolate** if your fever persists or other symptoms have not improved

**Isolate through day 10**, if you experienced moderate illness, like shortness of breath or difficulty breathing

## AFTER ISOLATION

Until at least day 11, avoid being around people who are more likely to get very sick

Wear a high-quality mask when around others indoors



### Removing your mask

After ending isolation, wear your mask through day 10

**OR**

Take 2 antigen tests, 48 hours apart

If both tests are negative, you may remove your mask sooner than day 10

**Isolate through day 10 and talk with a healthcare provider before you end isolation, if you**

- were hospitalized, or
- have a weakened immune system

